

FIRE PROTECTION ZONE SCHEDULE

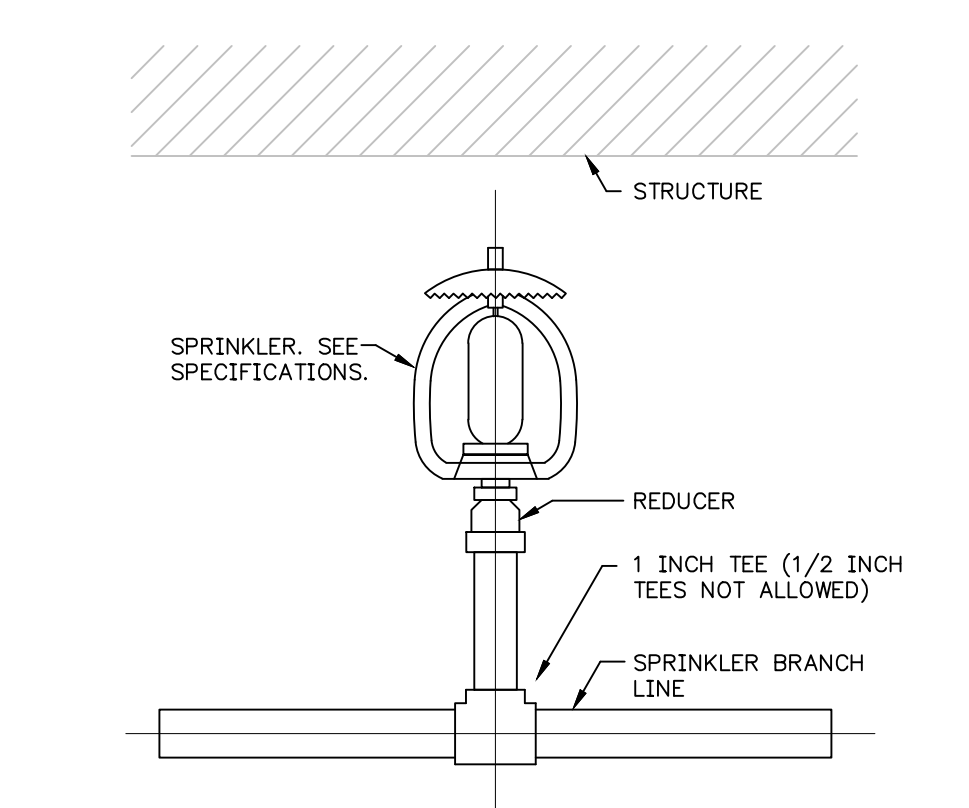
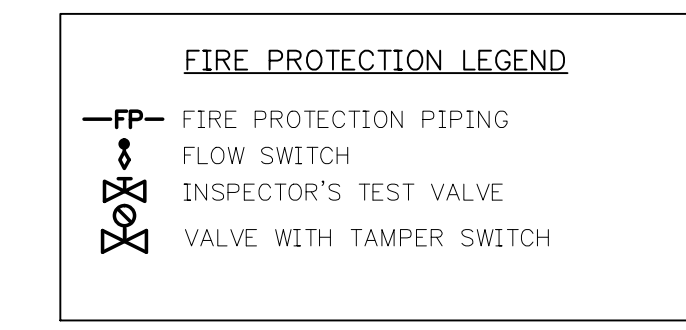
ZONE NO.	SQUARE FOOTAGE	SYSTEM TYPE	SUPPLY SOURCE	NFPA CLASSIFICATIONS			SPRINKLER STYLES USED	REMARKS
				OCCUPANCY	HAZARD	SPECIAL COMBUSTIBLE CLASSIFICATIONS (COMMODITIES)		
1	CAFETERIA BUILDING - ZONE 1	WET	CITY MAIN		LIGHT, ORDINARY GROUP 1	N/A	VARIES	

I.F.B.
ISSUE FOR BIDS
1/9/15

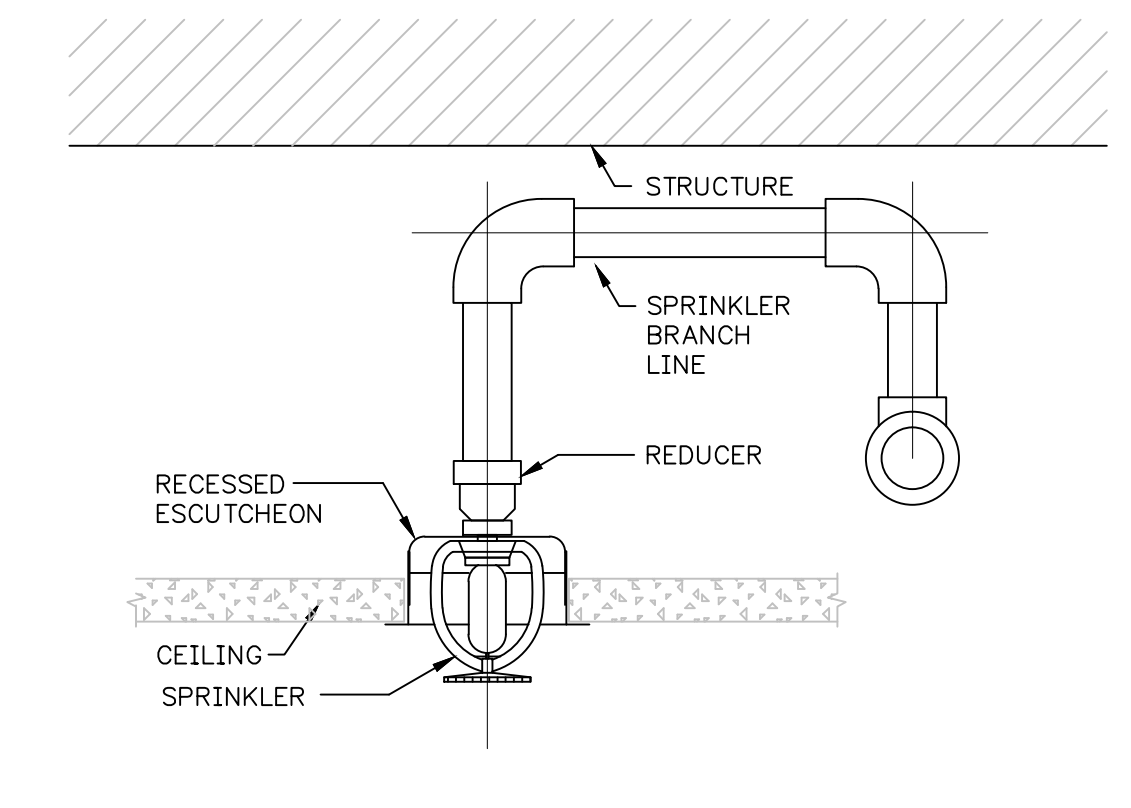
REVISIONS:

no.	date	description
A	1/9/2015	VE

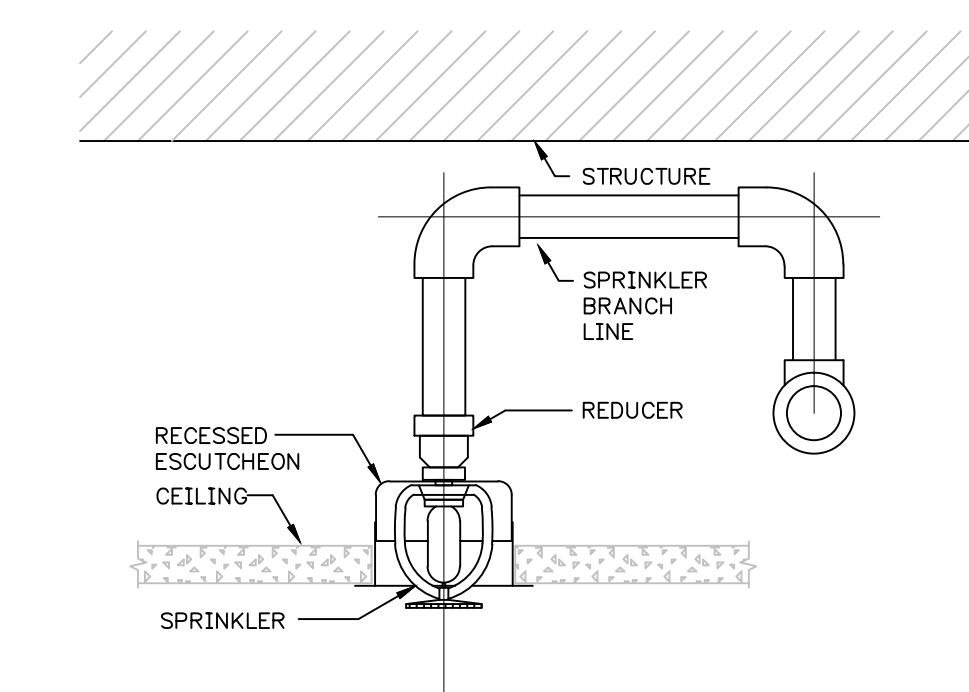
CONTRACTOR SHALL PROVIDE FIELD CONDUCTED FLOW TEST PRIOR TO BID:
LOCATION: _____
STATIC PRESSURE: _____
RESIDUAL PRESSURE: _____
FLOWING: _____ G.P.M.
DATE OF TEST: _____
TIME OF DAY: _____



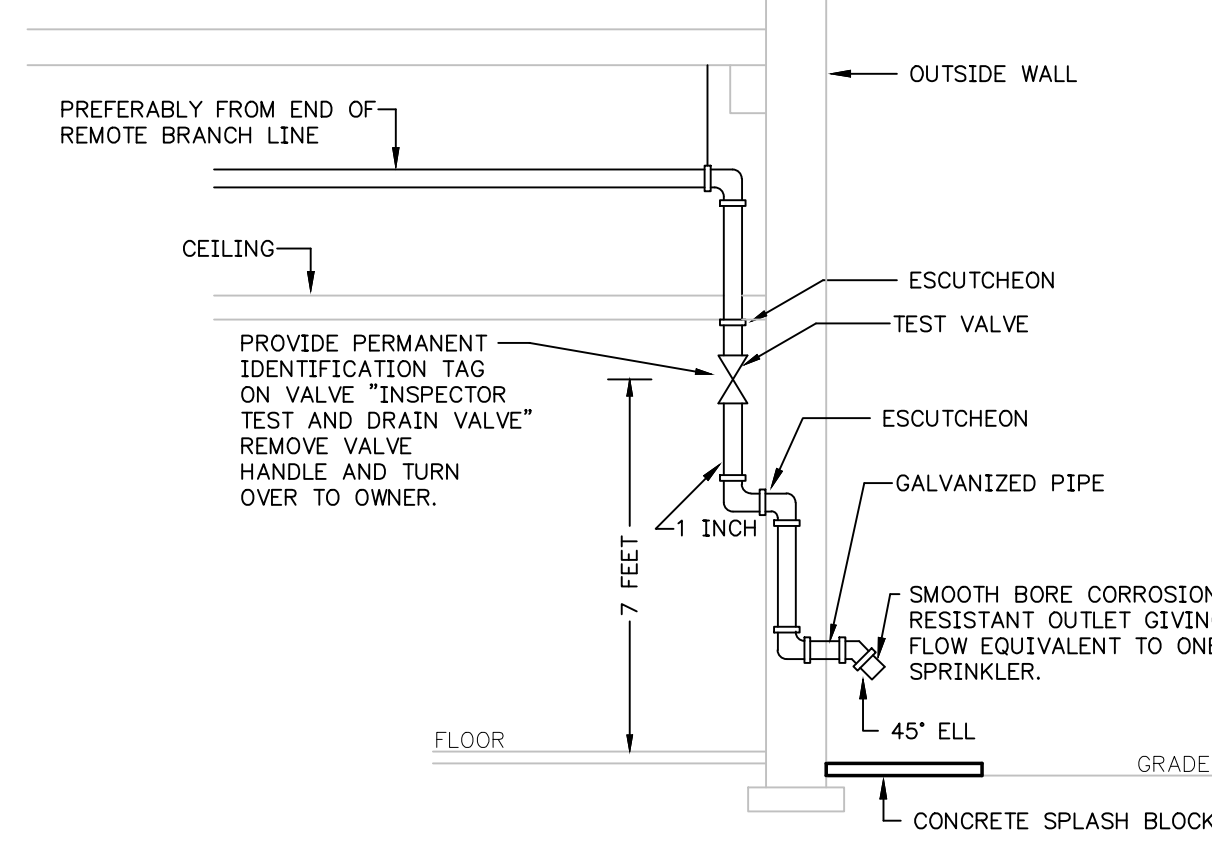
5 UPRIGHT SPRINKLER HEAD
FP0.01 NO SCALE



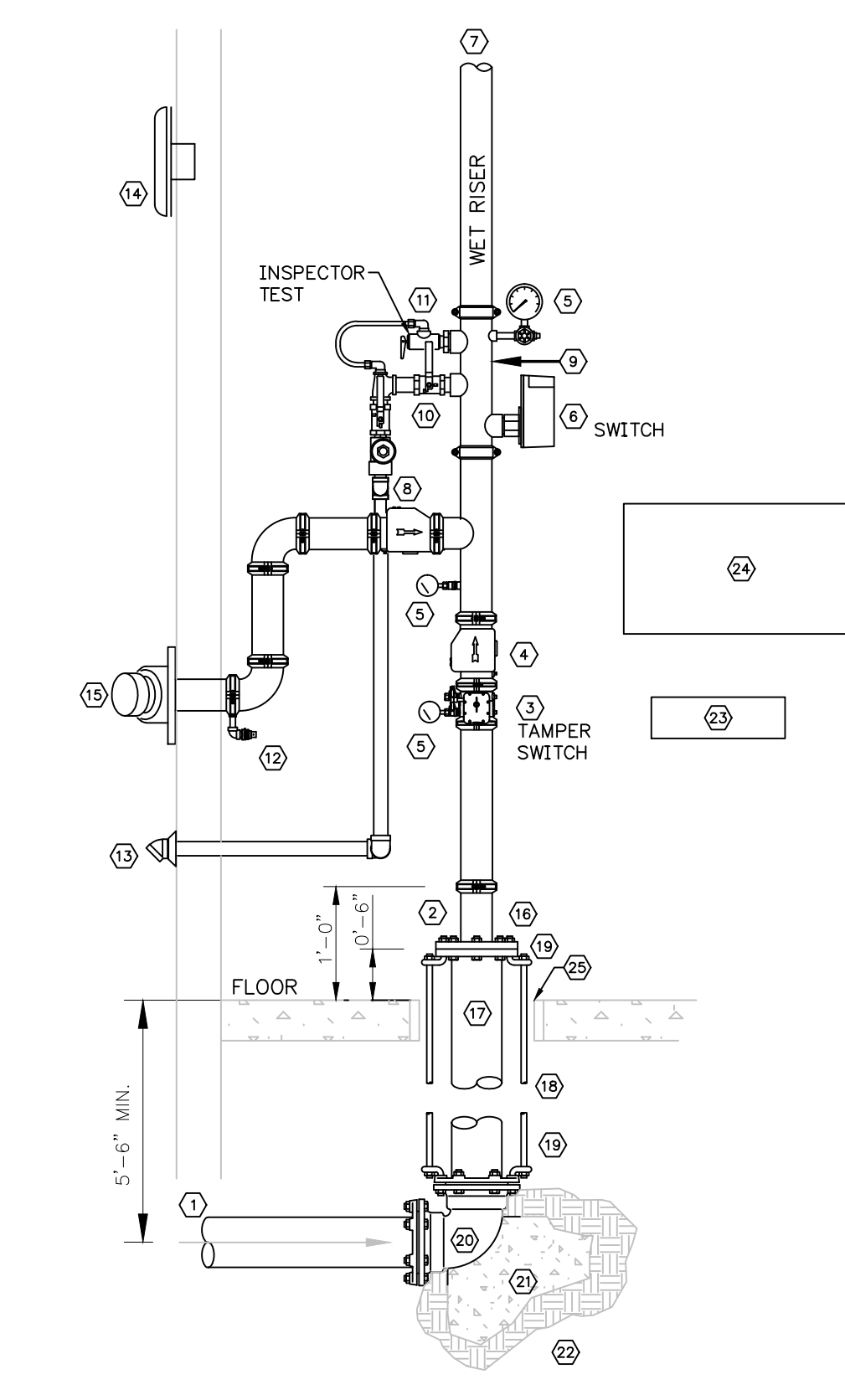
3 SEMI-RECESSED SPRINKLER HEAD
FP0.01 TYPICAL FOR ALL SPACES UNLESS NOTED OTHERWISE
NO SCALE



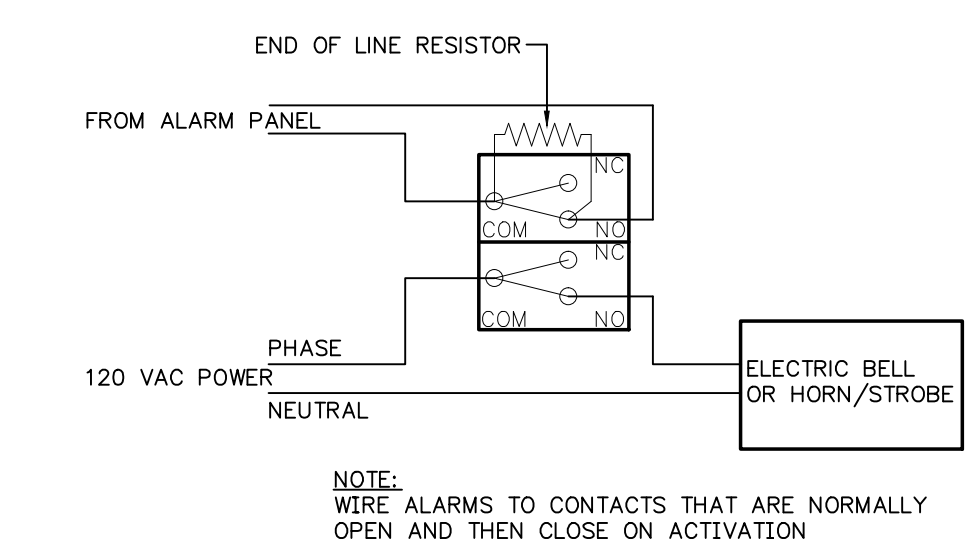
6 CONCEALED SPRINKLER HEAD
FP0.01 TYPICAL FOR CORRIDORS AND SPACES OPEN TO CORRIDOR
NO SCALE



4 INSPECTOR'S SPRINKLER TEST PIPE
FP0.01 NO SCALE



1 FIRE PROTECTION RISER SCHEMATIC
FP0.01 NO SCALE



2 ALARM BELL WIRING
FP0.01 NO SCALE

- DRAWING NOTES:**
- 1 WATER SUPPLY FROM CITY WATER MAIN. USE CLASS 53 DUCTILE IRON WHEN CROSSING UNDER BUILDING FOUNDATION.
 - 2 USE FLEXIBLE GROOVED PIPE COUPLING.
 - 3 GROOVED BUTTERFLY VALVE WITH INTEGRAL SUPERVISORY SWITCH.
 - 4 RISER CHECK VALVE WITH DRAIN AND GAUGES.
 - 5 PRESSURE GAUGE WITH ISOLATION VALVE.
 - 6 VANE TYPE WATER FLOW SWITCH.
 - 7 SUPPLY TO WET PIPE FIRE SPRINKLER SYSTEM.
 - 8 SWING CHECK VALVE.
 - 9 RISER MANIFOLD - INCLUDES PRESSURE GAUGE, FLOW SWITCH, PRESSURE RELIEF VALVE, AND TEST AND MAIN DRAIN DEVICE.
 - 10 INSPECTOR'S TEST & MAIN DRAIN DEVICE, PIPE TO OUTSIDE.
 - 11 PRESSURE RELIEF VALVE SHALL BE REQUIRED SET AT 175 P.S.I. - PIPED TO DISCHARGE.
 - 12 1/2" AUTOMATIC BALL DRIP VALVE.
 - 13 PIPE TO DRAIN OUTSIDE.
 - 14 WEATHERPROOF ELECTRIC BELL OR HORN AND STROBE.
 - 15 OUT TO FIRE DEPARTMENT CONNECTION WITH GALVANIZED SCH 40 PIPING - PROVIDE BALL DRIP WHEN TRAPPING PIPE. SIZE CONNECTION AS REQUIRED.
 - 16 GALVANIZED FLANGE AND SPOOL PIECE.
 - 17 CLASS 53 DUCTILE IRON FLANGED SPIGOT.
 - 18 3/4" A.T.R.
 - 19 3/4" BENT EYE BOLT.
 - 20 MECHANICAL JOINT 90° ELL.
 - 21 CONCRETE THRUST BLOCK WITH 5 SQ. FEET BEARING AREA.
 - 22 UNDISTURBED EARTH.
 - 23 DEVICE CABINET WITH SPARE SPRINKLER HEADS AND WRENCHES.
 - 24 LAMINATED SYSTEM MAP WITH SYSTEM START-UP AND SHUT-DOWN INSTRUCTIONS.
 - 25 PROVIDE SLEEVE WHERE PIPING PENETRATES BUILDING AT FLOOR. SEAL AROUND PENETRATION WITH FLEXIBLE MASTIC. PROVIDE 2" ANNULAR SPACE AROUND AND RESTRAIN FLANGE SPIGOT.

JEFFERSON COUNTY BOARD OF EDUCATION
A NEW CAFETERIA & RENOVATIONS FOR JOHNSON ELEMENTARY SCHOOL
9300 KERMIT JOHNSON ROAD
PINSON, AL 35126

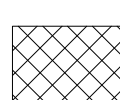
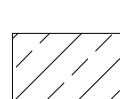

TurnerBatson
Architecture Interior Design Related Services
1850 Stonegate Drive, Suite 200 • Birmingham, Alabama 35242
Phone: (205) 403-6201 • Fax: (205) 403-6206
www.turnerbatson.com

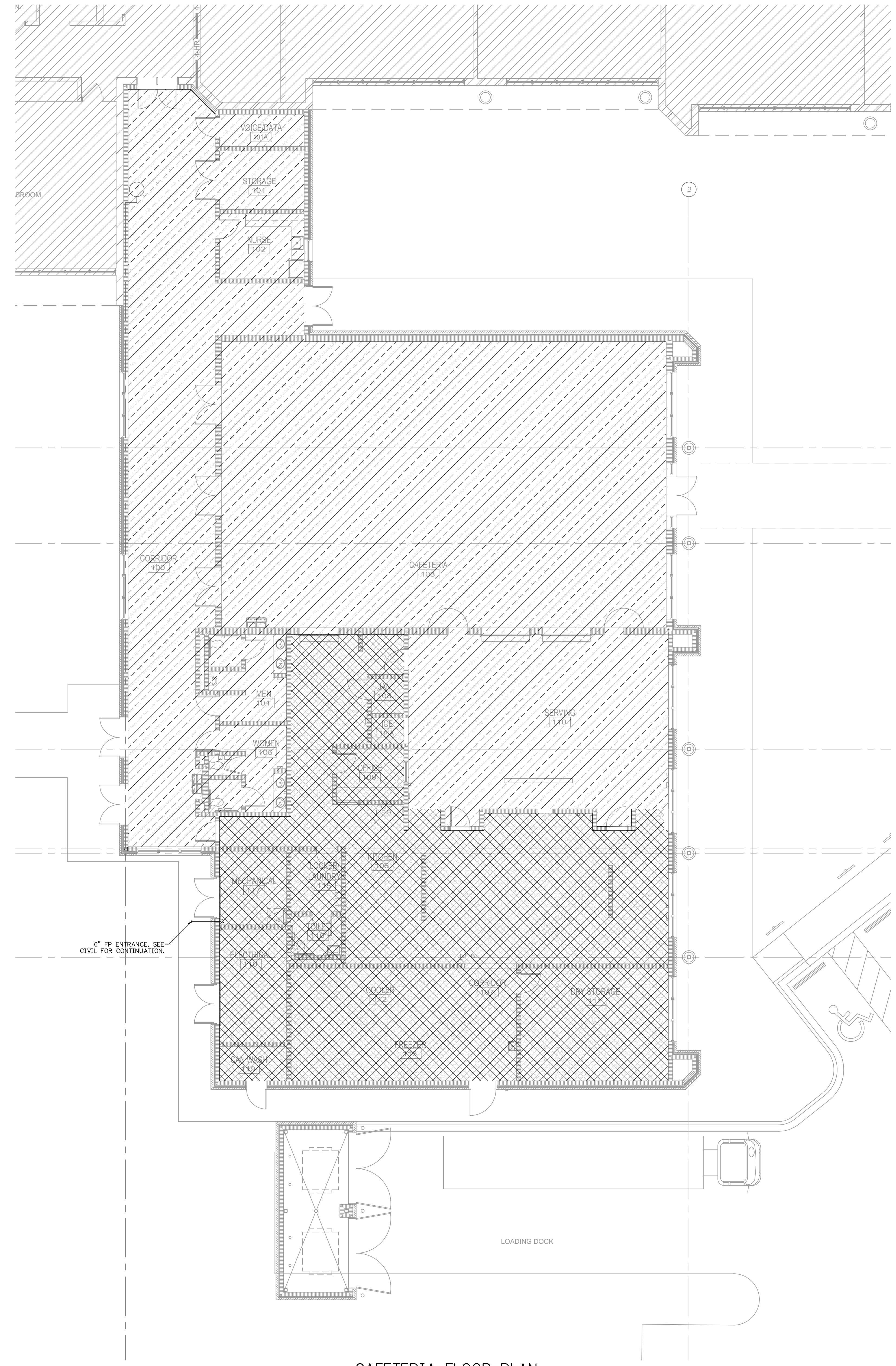
SHEET TITLE:
FIRE PROTECTION SCHEDULE AND DETAILS
PROJECT NUMBER: 2617
ISSUE DATE: 1/9/15
DRAWN BY: ZBL/JWC
CHECKED BY: JMH

SHEET NUMBER
FP0.01
REV:

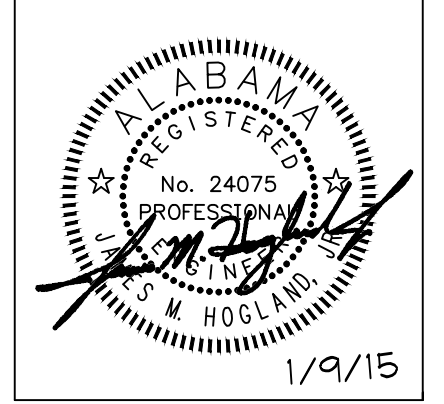
F:\Projects\141102 - Johnson ES New Cafeteria\Design\141102.dwg 1/9/15 11:41 AM

- GENERAL NOTES:**
- 1 FIRE PROTECTION LAYOUTS SHOWN ON PLANS ARE FOR INFORMATIONAL PURPOSES ONLY. IT IS THE INTENT OF THESE DRAWINGS TO INDICATE AREAS OF COVERAGE, TYPES OF SPRINKLER HEADS AND FINISHES TO BE USED, TYPES OF FIRE PROTECTION SYSTEMS TO BE INSTALLED AND LOCATIONS OF MAJOR EQUIPMENT AND COMPONENTS. THE FIRE PROTECTION CONTRACTOR SHALL DESIGN A FULL AND COMPLETE FIRE PROTECTION SYSTEM BASED ON HYDRAULIC INFORMATION, LAYOUT OF PIPING SYSTEM AS COORDINATED WITH OTHER TRADES AND SPECIFIC COMPONENTS USED IN FIRE PROTECTION SYSTEM. ALL DESIGNS SHALL BE PER NFPA-13.
 - 2 PIPING LAYOUT SHOWN IS DIAGRAMMATIC AND NOT INTENDED TO SHOW ALL OFFSETS AND CHANGES IN ELEVATION NECESSARY FOR COMPLETE INSTALLATION. IT IS THE CONTRACTOR'S RESPONSIBILITY TO FIELD VERIFY EXISTING CONDITIONS AND DIMENSIONS PRIOR TO SUBMITTING BID.
 - 3 CONTRACTOR SHALL PROVIDE NECESSARY OFFSETS IN NEW AND EXISTING PIPING AND ELECTRICAL CONDUIT AS REQUIRED TO ACCOMMODATE NEW WORK. CONTRACTOR SHALL ALLOW FOR ANY CONFLICTS ENCOUNTERED.
 - 4 REFER TO ARCHITECT'S REFLECTED CEILING PLAN FOR LOCATION OF LIGHTS, DIFFUSERS, GRILLES AND ALL OTHER CEILING MOUNTED DEVICES. COORDINATE WITH THE REFLECTED CEILING PLAN TO DETERMINE ACTUAL LOCATION OF SPRINKLERS.
 - 5 ALL NEW FIRE PROTECTION PIPING SHALL BE INSTALLED AS CLOSE TO STRUCTURE ABOVE AS POSSIBLE.
 - 6 ALL UNUSED FIRE PROTECTION PIPING, WHETHER NEW OR EXISTING, SHALL BE REMOVED. ALL SPRINKLER HEADS INSTALLED UNDER THIS CONTRACT SHALL BE NEW.
 - 7 SPACE ABOVE CEILING IS LIMITED. CAREFUL COORDINATION WITH LIGHTING, ELECTRICAL, PLUMBING, STRUCTURE, PNEUMATIC TUBE, AND ARCHITECTURAL TRADES IS CRITICAL TO COMPLETE INSTALLATION.
 - 8 COORDINATION SHOP DRAWINGS SHALL BE PREPARED FOR THE ENTIRE PROJECT DRAWN TO 1/4" = 1'-0" SCALE (MINIMUM). DRAWINGS SHALL BE FULLY DIMENSIONED, INCLUDING ELEVATIONS OF DUCTWORK, PIPING, MAJOR HANGER SUPPORTS, PNEUMATIC TUBING AND MAJOR ELECTRICAL CONDUIT (2" AND LARGER). CEILING COORDINATION PLANS SHALL ALSO SHOW CEILING GRID, LIGHTING LAYOUT, SPRINKLER LAYOUT AND MECHANICAL GRILLES.
 - 9 GENERAL CONTRACTOR SHALL BE RESPONSIBLE FOR COLLECTION VERIFICATION AND SUBMITTAL OF SHOP DRAWINGS TO OWNER, ARCHITECT AND ENGINEER.
 - 10 SYSTEM DESIGN AND INSTALLATION SHALL COMPLY WITH NFPA 72.
 - 11 WHERE REFERENCED SYSTEM SHALL COMPLY WITH NFPA 70.
 - 12 ALL SPRINKLERS WITHIN THE SCOPE OF THIS PROJECT SHALL BE QUICK RESPONSE TYPE. SPRINKLER HEADS USED SHALL COMPLY WITH COMPARTMENTALIZATION REQUIREMENTS OF NFPA-13.
 - 13 CONTRACTOR SHALL PROVIDE TEST AND DRAIN CONNECTION IN ACCORDANCE WITH NFPA-13. DRAIN SHALL DISCHARGE TO A LOCATION CAPABLE OF ACCEPTING FULL FLOW UNDER NORMAL SYSTEM PRESSURE WITHOUT CAUSING WATER DAMAGE.

-  HATCHING INDICATES SCOPE OF NEW WORK PROVIDE SEMI-RECESSED HEADS IN THIS AREA.
-  HATCHING INDICATES SCOPE OF NEW WORK PROVIDE CONCEALED HEADS IN THIS AREA.
-  HATCHING INDICATES SCOPE OF NO WORK



CAFETERIA FLOOR PLAN
 FIRE PROTECTION
 0 2 4 6 8 16
 SCALE: 1/8" = 1'-0"



I.F.B.
 ISSUE FOR BIDS
 1/9/15

REVISIONS:

no.	date	description
A	1/9/2015	VE

JEFFERSON COUNTY BOARD OF EDUCATION
A NEW CAFETERIA & RENOVATIONS FOR JOHNSON ELEMENTARY SCHOOL
 9300 KERMIT JOHNSON ROAD
 PINSON, AL 35126

TurnerBatson
 Architecture Interior Design Related Services
 1950 Stonegate Drive, Suite 200 • Birmingham, Alabama 35242
 Phone: (205) 403-6201 • Fax: (205) 403-6206
 www.turnerbatson.com

SHEET TITLE: FIRE PROT. CAFETERIA & KITCHEN FLOOR PLAN
 PROJECT NUMBER: 2617
 ISSUE DATE: 1/9/15
 DRAWN BY: ZBL/JWC
 CHECKED BY: JMH

SHEET NUMBER
FP2.01
 REV: